

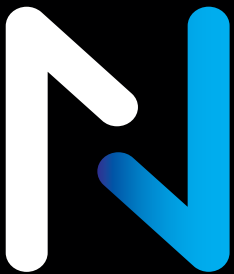
Range overview

	WL30-550BL12	WL30-550BL14	WL30-550BL16	WL30-550BL18
Fixed				
	WL35-550BL12	WL35-550BL14	WL35-550BL16	WL35-550BL18
Tilt				
	WL40-550BL12	WL40-550BL14	WL40-550BL16	WL40-550BL18
Full motion				
	WL40-540BL12	WL40-540BL14		



	WL30S-850BL12	WL30S-850BL14	WL30S-850BL16	WL30S-850BL18
Fixed				
	WL35S-850BL12	WL35S-850BL14	WL35S-850BL16	WL35S-850BL18
Tilt				
	WL40S-850BL12	WL40S-850BL14	WL40S-850BL16	WL40S-850BL18
Full motion				
	WL40S-840BL12	WL40S-840BL14		

SELECT



Questions? Don't hesitate to contact us
at phone number +31 (0)23-5478888 or mail to sales@neomounts.com
Wateringweg 62 | 2031 EJ Haarlem | The Netherlands | +31(0)23-5478888 | info@neomounts.com
www.neomounts.com

Wall mounting solutions

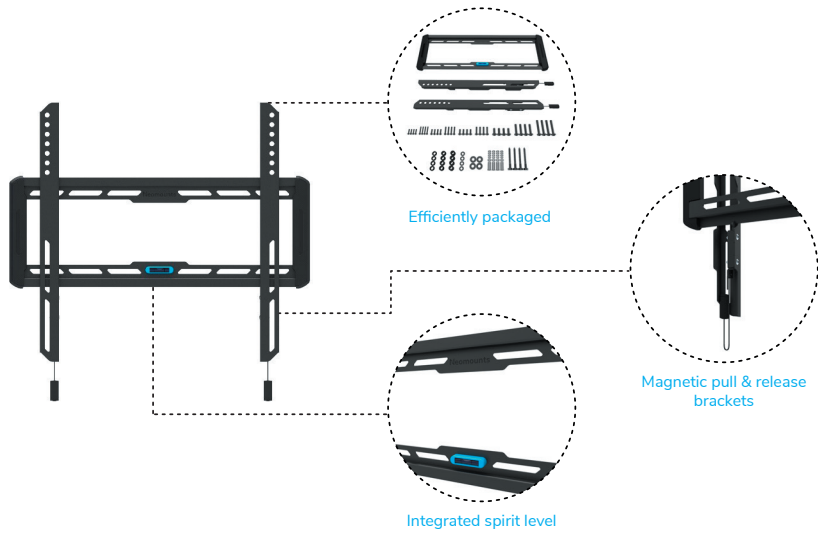


Easy install wall mount range

WL30 series
Fixed

Range specification

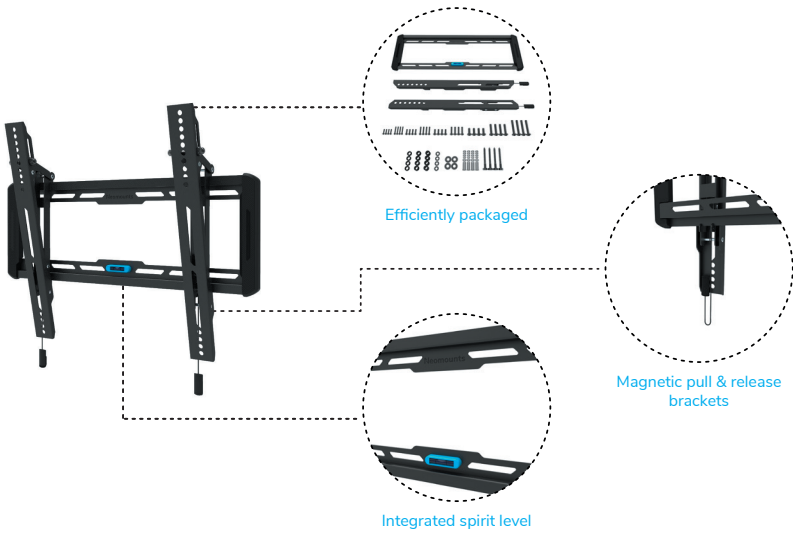
- 24-86" | 61-218,4 cm
- 50x50 - 800x400 mm
- 0-70 kg | 0-154,3 lbs



WL35 series
Tilt

Range specification

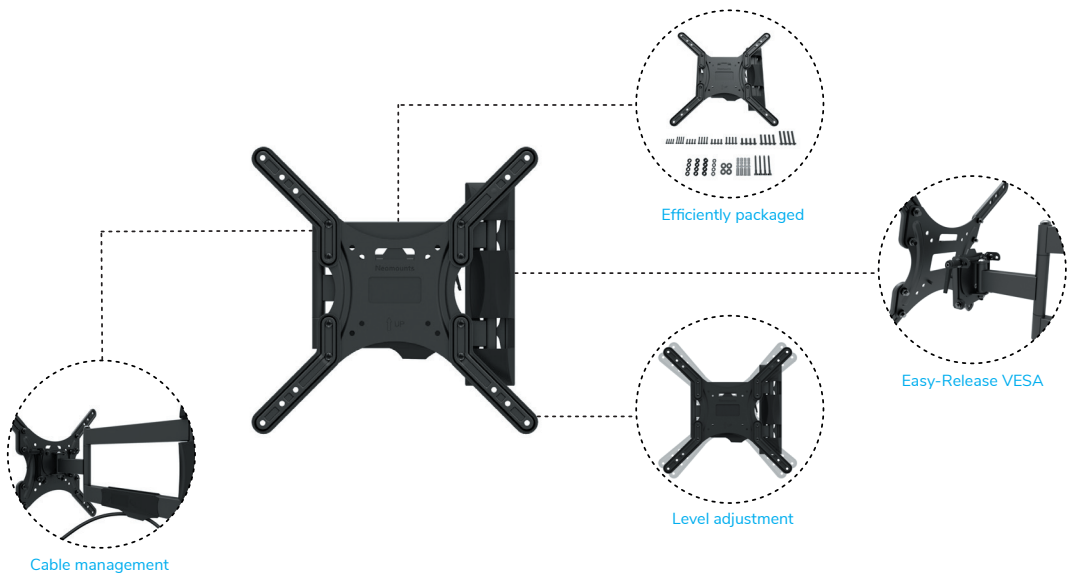
- 24-86" | 61-218,4 cm
- 75x75 - 800x400 mm
- 0-70 kg | 0-154,3 lbs



WL40 series
Full motion

Range specification

- 32-75" | 81,3-190,5 cm
- 100x100 - 800x400 mm
- 0-45 kg | 0-99,2 lbs



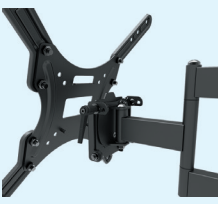
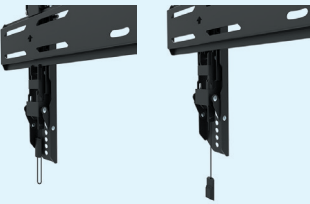
Installation made easy

Neomounts complete easy install wall mount range with fixed, tiltable and full motion wall mounts, both in the Neomounts and Neomounts Select product assortments, is specifically designed to give you the best experience possible; not only when using the mount, but also when installing it.



Magnetic pull & release

Several mounts feature the nifty magnetic pull & release system, which allows you to attach the TV in a wink of an eye and secure the TV in a safe and solid manner. Following installation, the pull & release straps can be easily hidden behind the screen by clicking the magnet to the mount. The models which do not have the magnetic pull & release system are equipped with an easy-release VESA system, to quickly (de-)attach the VESA to the mount.



Spirit level

All wall mounts, with the exception of the WL40 series, include a spirit level to ensure easy installation. The Neomounts models feature an integrated spirit level, while the Neomounts Select models have a separate magnetic spirit level, which can also be used for other purposes, in addition to installing the mount.



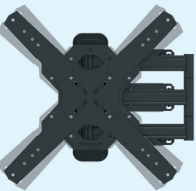
Fixing template

All Neomounts Select wall mounts have a fixing template included in the packaging, to make installation of the mount even easier.



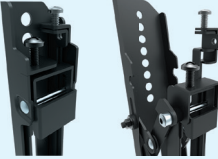
Level adjustment

Various mounts offer height and level adjustment, after installation to the wall. This guarantees the perfect installation of your wall mount.



Lockable

It is possible to lock various models, using the special anti-theft screw which is included with the wallmount, or with a padlock (not included).



Efficiently packaged

The wall mounts are clearly packaged and all components are neatly organised, to make installation as simple and effortless as possible.

The packaging of the Neomounts Select models include a special bolt box, making the installation process even more efficient.

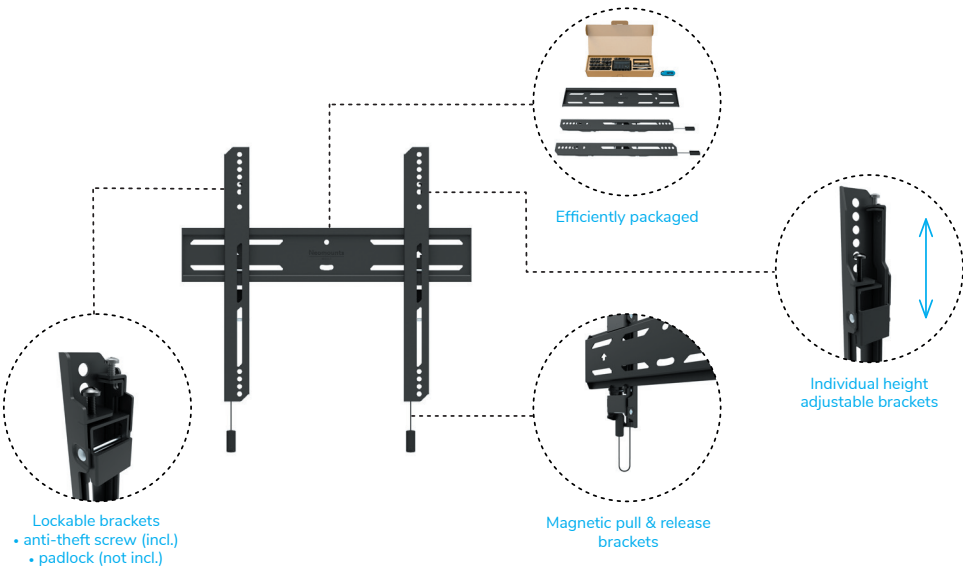


SELECT

WL30S series
Fixed

Range specification

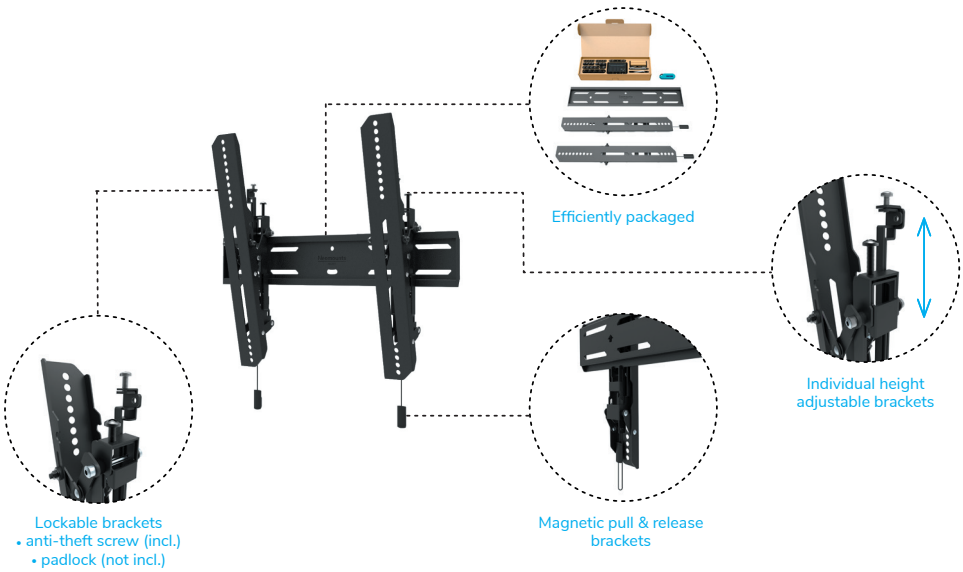
- 24-98" | 61-248,9 cm
- 50x50 - 800x400 mm
- 0-100 kg | 0-220,5 lbs



WL35S series
Tilt

Range specification

- 24-98" | 61-248,9 cm
- 75x75 - 800x400 mm
- 0-100 kg | 0-220,5 lbs



WL40S series
Full motion

Range specification

- 32-86" | 81,3-218,4 cm
- 100x100 - 800x400 mm
- 0-60 kg | 0-132,3 lbs

